

HIGHLIGHTS OF PRESCRIBING INFORMATION

These highlights do not include all the information needed to use DOXORUBICIN HYDROCHLORIDE safely and effectively. See full prescribing information for DOXORUBICIN HYDROCHLORIDE.

DOXORUBICIN HYDROCHLORIDE injection, for intravenous use
DOXORUBICIN HYDROCHLORIDE for injection, for intravenous use
Initial U.S. Approval: 1974

WARNING: CARDIOMYOPATHY, SECONDARY MALIGNANCIES, EXTRAVASATION AND TISSUE NECROSIS, and SEVERE MYELOSUPPRESSION

See full prescribing information for complete boxed warning.

- **Cardiomyopathy:** Myocardial damage can occur with doxorubicin HCl with incidences from 1% - 20% for cumulative doses from 300 mg/m² to 500 mg/m² when doxorubicin HCl is administered every 3 weeks. The risk of cardiomyopathy is further increased with concomitant cardiotoxic therapy. Assess left ventricular ejection fraction (LVEF) before and regularly during and after treatment with doxorubicin HCl. (5.1)
- **Secondary Malignancies:** Secondary acute myelogenous leukemia (AML) and myelodysplastic syndrome (MDS) occur at a higher incidence in patients treated with anthracyclines, including doxorubicin HCl. (5.2)
- **Extravasation and Tissue Necrosis:** Extravasation of doxorubicin HCl can result in severe local tissue injury and necrosis requiring wide excision and skin grafting. Immediately terminate the drug, and apply ice to the affected area. (5.3)
- **Severe myelosuppression resulting in serious infection, septic shock, requirement for transfusions, hospitalization, and death may occur.** (5.4)

INDICATIONS AND USAGE

Doxorubicin hydrochloride (HCl) is an anthracycline topoisomerase II inhibitor indicated:

- as a component of multiagent adjuvant chemotherapy for treatment of women with axillary lymph node involvement following resection of primary breast cancer (1.1).
- for the treatment of: acute lymphoblastic leukemia, acute myeloblastic leukemia, Hodgkin lymphoma, Non-Hodgkin lymphoma, metastatic breast cancer, metastatic Wilms' tumor, metastatic neuroblastoma, metastatic soft tissue sarcoma, metastatic bone sarcomas, metastatic ovarian carcinoma, metastatic transitional cell bladder carcinoma, metastatic thyroid carcinoma, metastatic gastric carcinoma, metastatic bronchogenic carcinoma (1.2).

DOSAGE AND ADMINISTRATION

- Single agent: 60 to 75 mg/m² given intravenously every 21 days (2.1).
- In combination therapy: 40 to 75 mg/m² given intravenously every 21 to 28 days (2.1).

- Discontinue doxorubicin HCl in patients who develop signs or symptoms of cardiomyopathy (2.2).
- Reduce dose in patients with hepatic impairment (2.2).

DOSAGE FORMS AND STRENGTHS

- Doxorubicin HCl injection: Vials contain 10 mg/5 mL, 20 mg/10 mL, 50 mg/25 mL, 150 mg/75 mL, and 200 mg/100 mL as a solution (3)
- Doxorubicin HCl for injection: Vials contain 10 mg, 20 mg, 50 mg, and 150 mg as a lyophilized powder (3)

CONTRAINDICATIONS

- Severe myocardial insufficiency (4)
- Recent myocardial infarction (4)
- Severe persistent drug-induced myelosuppression (4)
- Severe hepatic impairment (4)
- Hypersensitivity to doxorubicin HCl (4)

WARNINGS AND PRECAUTIONS

- Radiation-induced toxicity can be increased by the administration of doxorubicin HCl. Radiation recall can occur in patients who receive doxorubicin HCl after prior radiation therapy (5.7).
- Embryofetal Toxicity: Can cause fetal harm. Advise females of reproductive potential of potential risk to the fetus (5.8).

ADVERSE REACTIONS

The most common (>10%) adverse drug reactions are alopecia, nausea and vomiting (6.1).

To report SUSPECTED ADVERSE REACTIONS, contact Pfizer, Inc. at 1-800-438-1985 or FDA at 1-800-FDA-1088 or www.fda.gov/medwatch.

DRUG INTERACTIONS

- Avoid concurrent use of doxorubicin HCl with inhibitors and inducers of CYP3A4, CYP2D6, and/or P-gp (7.1).
- Do not administer doxorubicin HCl in combination with trastuzumab due to increased risk of cardiac dysfunction (5.1, 7.2).

USE IN SPECIFIC POPULATIONS

- Nursing Mothers: Discontinue drug or nursing taking into consideration importance of drug to mother (8.3).
- Pediatric Use: Recommend long-term follow-up cardiac evaluations due to risk of delayed cardiotoxicity (8.4).
- Females and Males of Reproductive Potential: May impair fertility. Counsel female and male patients on pregnancy planning and prevention (8.6).

See 17 for PATIENT COUNSELING INFORMATION and FDA-approved patient labeling.

Revised: 1/2014

FULL PRESCRIBING INFORMATION: CONTENTS*

WARNING: CARDIOMYOPATHY, SECONDARY MALIGNANCIES, EXTRAVASATION AND TISSUE NECROSIS, and SEVERE MYELOSUPPRESSION

1 INDICATIONS AND USAGE

2 DOSAGE AND ADMINISTRATION

- 2.1 Recommended Dose
- 2.2 Dose Modifications
- 2.3 Preparation and Administration
- 2.4 Procedures for Proper Handling and Disposal

3 DOSAGE FORMS AND STRENGTHS

4 CONTRAINDICATIONS

5 WARNINGS AND PRECAUTIONS

- 5.1 Cardiomyopathy and Arrhythmias
- 5.2 Secondary Malignancies
- 5.3 Extravasation and Tissue Necrosis
- 5.4 Severe Myelosuppression
- 5.5 Use in Patients with Hepatic Impairment
- 5.6 Tumor Lysis Syndrome
- 5.7 Radiation Sensitization and Radiation Recall
- 5.8 Embryofetal Toxicity

6 ADVERSE REACTIONS

- 6.1 Clinical Trial Experience in Breast Cancer

6.2 Postmarketing Experience

7 DRUG INTERACTIONS

- 7.1 Effect of CYP3A4 Inhibitors, Inducers and P-gp
- 7.2 Trastuzumab
- 7.3 Paclitaxel
- 7.4 Dexrazoxane
- 7.5 6-Mercaptopurine

8 USE IN SPECIFIC POPULATIONS

- 8.1 Pregnancy
- 8.3 Nursing Mothers
- 8.4 Pediatric Use
- 8.5 Geriatric Use
- 8.6 Females and Males of Reproductive Potential
- 8.7 Hepatic Impairment

10 OVERDOSAGE

11 DESCRIPTION

12 CLINICAL PHARMACOLOGY

- 12.1 Mechanism of Action
- 12.3 Pharmacokinetics

13 NONCLINICAL TOXICOLOGY

- 13.1 Carcinogenesis, Mutagenesis, Impairment of Fertility

- 14 CLINICAL STUDIES
- 15 REFERENCES
- 16 HOW SUPPLIED/STORAGE AND HANDLING
- 17 PATIENT COUNSELING INFORMATION

* Sections or subsections omitted from the full prescribing information are not listed.

FULL PRESCRIBING INFORMATION

WARNING: CARDIOMYOPATHY, SECONDARY MALIGNANCIES, EXTRAVASATION AND TISSUE NECROSIS, and SEVERE MYELOSUPPRESSION

- **Cardiomyopathy:** Myocardial damage, including acute left ventricular failure can occur with doxorubicin HCl. The risk of cardiomyopathy is proportional to the cumulative exposure with incidence rates from 1% - 20% for cumulative doses ranging from 300 mg/m² to 500 mg/m² when doxorubicin HCl is administered every 3 weeks. The risk of cardiomyopathy is further increased with concomitant cardiotoxic therapy. Assess LVEF before and regularly during and after treatment with doxorubicin HCl [*see Warnings and Precautions (5.1)*].
- **Secondary Malignancies:** Secondary acute myelogenous leukemia (AML) and myelodysplastic syndrome (MDS) occur at a higher incidence in patients treated with anthracyclines, including doxorubicin HCl [*see Warnings and Precautions (5.2)*].
- **Extravasation and Tissue Necrosis:** Extravasation of doxorubicin HCl can result in severe local tissue injury and necrosis requiring wide excision of the affected area and skin grafting. Immediately terminate the drug and apply ice to the affected area [*see Warnings and Precautions (5.3)*].
- **Severe myelosuppression** resulting in serious infection, septic shock, requirement for transfusions, hospitalization, and death may occur [*see Warnings and Precautions (5.4)*].

1 INDICATIONS AND USAGE

1.1 Adjuvant Breast Cancer

Doxorubicin HCl is indicated as a component of multi-agent adjuvant chemotherapy for treatment of women with axillary lymph node involvement following resection of primary breast cancer [*see Clinical Studies (14.1)*].

1.2 Other Cancers

Doxorubicin HCl is indicated for the treatment of

- acute lymphoblastic leukemia
- acute myeloblastic leukemia
- Hodgkin lymphoma
- non-Hodgkin lymphoma (NHL)
- metastatic breast cancer
- metastatic Wilms' tumor
- metastatic neuroblastoma
- metastatic soft tissue sarcoma
- metastatic bone sarcoma
- metastatic ovarian carcinoma
- metastatic transitional cell bladder carcinoma
- metastatic thyroid carcinoma

- metastatic gastric carcinoma
- metastatic bronchogenic carcinoma

2 DOSAGE AND ADMINISTRATION

2.1 Recommended Dose

Adjuvant Breast Cancer

The recommended dose of doxorubicin HCl is 60 mg/m² administered as an intravenous bolus on day 1 of each 21-day treatment cycle, in combination with cyclophosphamide, for a total of four cycles [see *Clinical Studies (14)*].

Metastatic Disease, Leukemia, or Lymphoma

- The recommended dose of doxorubicin HCl when used as a single agent is 60 to 75 mg/m² intravenously every 21 days.
- The recommended dose of doxorubicin HCl, when administered in combination with other chemotherapy drugs, is 40 to 75 mg/m² intravenously every 21 to 28 days.
- Consider use of the lower doxorubicin dose in the recommended dose range or longer intervals between cycles for heavily pretreated patients, elderly patients, or obese patients.
- Cumulative doses above 550 mg/m² are associated with an increased risk of cardiomyopathy [see *Warnings and Precautions (5.1)*].

2.2 Dose Modifications

Cardiac Impairment

Discontinue doxorubicin in patients who develop signs or symptoms of cardiomyopathy.

Hepatic Impairment

Doxorubicin HCl is contraindicated in patients with severe hepatic impairment (Child-Pugh Class C or serum bilirubin >5.0 mg/dL) [see *Contraindications (4)*].

Decrease the dose of doxorubicin HCl in patients with elevated serum total bilirubin concentrations as follows:

Serum bilirubin concentration	Doxorubicin HCl Dose reduction
1.2 – 3.0 mg/dL	50 %
3.1 – 5.0 mg/dL	75 %
greater than 5.0 mg/dL	Do not initiate doxorubicin HCl Discontinue doxorubicin HCl

[see *Warnings and Precautions (5.5)* and *Use in Specific Population (8.7)*]

2.3 Preparation and Administration

Preparation of Doxorubicin HCl for injection

Reconstitute doxorubicin hydrochloride for injection with 0.9% Sodium Chloride Injection, USP to obtain a final concentration of 2 mg per mL as follows:

- 5 mL 0.9% Sodium Chloride Injection, USP to reconstitute 10 mg doxorubicin HCl vial
- 10 mL 0.9% Sodium Chloride Injection, USP to reconstitute 20 mg doxorubicin HCl vial
- 25 mL 0.9% Sodium Chloride Injection, USP to reconstitute 50 mg doxorubicin HCl vial
- 75 mL 0.9% Sodium Chloride Injection, USP to reconstitute 150 mg doxorubicin HCl vial

Gently shake vial until the contents have dissolved.

Protect reconstituted solution from light.

Preparation for Continuous Intravenous Infusion

Dilute doxorubicin HCl solution or reconstituted solution in 0.9% Sodium Chloride Injection, USP or 5% Dextrose Injection, USP. Protect from light following preparation until completion of infusion.

Administration

Visually inspect parenteral drug products for particulate matter and discoloration prior to administration, whenever solution and container permit. Discard if the solution is discolored, cloudy, or contains particulate matter.

Storage of vials of Doxorubicin HCl Injection or Doxorubicin HCl for Injection following reconstitution under refrigerated conditions can result in the formation of a gelled product. Place gelled product at room temperature [15° to 30°C (59° to 86°F)] for 2 to 4 hours to return the product to a slightly viscous, mobile solution.

Administration by Intravenous Injection:

- Administer doxorubicin HCl as an intravenous injection through a central intravenous line or a secure and free-flowing peripheral venous line containing 0.9% Sodium Chloride Injection, USP, 0.45% Sodium Chloride Injection, USP, or 5% Dextrose Injection, USP.
- Administer doxorubicin HCl intravenously over 3 to 10 minutes. Decrease the rate of doxorubicin HCl administration if erythematous streaking along the vein proximal to the site of infusion or facial flushing occur.

Administration by Continuous Intravenous Infusion:

- Infuse only through a central catheter. Decrease the rate of doxorubicin HCl administration if erythematous streaking along the vein proximal to the site of infusion or facial flushing occur.
- Protect from light from preparation for infusion until completion of infusion.

Management of Suspected Extravasation

Discontinue doxorubicin HCl for burning or stinging sensation or other evidence indicating perivenous infiltration or extravasation. Manage confirmed or suspected extravasation as follows:

- Do not remove the needle until attempts are made to aspirate extravasated fluid.
- Do not flush the line.
- Avoid applying pressure to the site.
- Apply ice to the site intermittently for 15 min 4 times a day for 3 days.
- If the extravasation is in an extremity, elevate the extremity.
- In adults, consider administration of dexrazoxane [*see Warnings and Precautions (5.3)*].

Incompatibility with Other Drugs

Do not admix doxorubicin HCl with other drugs. If doxorubicin HCl is mixed with heparin or fluorouracil a precipitate may form. Avoid contact with alkaline solutions which can lead to hydrolysis of doxorubicin HCl.

2.4 Procedures for Proper Handling and Disposal

Handle and dispose of doxorubicin HCl consistent with recommendations for the handling and disposal of hazardous drugs.¹

Treat accidental contact with the skin or eyes immediately by copious lavage with water, or soap and water, or sodium bicarbonate solution. Do not abrade the skin by using a scrub brush. Seek medical attention.

3 DOSAGE FORMS AND STRENGTHS

Doxorubicin Hydrochloride Injection: Vials contain 10 mg/5 mL, 20 mg/10 mL, 50 mg/25 mL, 150 mg/75 mL, and 200 mg/100 mL doxorubicin hydrochloride as a clear red solution.

Doxorubicin Hydrochloride for Injection: Vials contain 10 mg, 20 mg, 50 mg, and 150 mg doxorubicin hydrochloride as a red-orange lyophilized powder.

4 CONTRAINDICATIONS

Doxorubicin HCl is contraindicated in patients with:

- Severe myocardial insufficiency [*see Warnings and Precautions (5.1)*]
- Recent (occurring within the past 4-6 weeks) myocardial infarction [*see Warnings and Precautions (5.1)*]
- Severe persistent drug-induced myelosuppression [*see Warnings and Precautions (5.4)*]
- Severe hepatic impairment (defined as Child Pugh Class C or serum bilirubin level greater than 5 mg/dL) [*see Warnings and Precautions (5.5)*]
- Severe hypersensitivity reaction to doxorubicin HCl including anaphylaxis [*see Adverse Reactions (6.2)*]

5 WARNINGS AND PRECAUTIONS

5.1 Cardiomyopathy and Arrhythmias

Cardiomyopathy

Doxorubicin HCl can result in myocardial damage, including acute left ventricular failure. The risk of cardiomyopathy is generally proportional to the cumulative exposure. Include prior doses of other anthracyclines or anthracenediones in calculations of total cumulative dosage for doxorubicin HCl. Cardiomyopathy may develop during treatment or up to several years after completion of treatment and can include decrease in LVEF and signs and symptoms of congestive heart failure (CHF). The probability of developing cardiomyopathy is estimated to be 1 to 2% at a total cumulative dose of 300 mg/m² of doxorubicin HCl, 3 to 5% at a dose of 400 mg/m², 5 to 8% at a dose of 450 mg/m², and 6 to 20% at a dose of 500 mg/m², when doxorubicin HCl is administered every 3 weeks. There is an additive or potentially synergistic increase in the risk of cardiomyopathy in patients who have received radiotherapy to the mediastinum or concomitant therapy with other known cardiotoxic agents such as cyclophosphamide and trastuzumab.

Pericarditis and myocarditis have also been reported during or following doxorubicin HCl treatment.

Assess left ventricular cardiac function (e.g., MUGA or echocardiogram) prior to initiation of doxorubicin HCl, during treatment to detect acute changes, and after treatment to detect delayed cardiotoxicity. Increase the frequency of assessments as the cumulative dose exceeds 300 mg/m². Use the same method of assessment of LVEF at all time points [*see Use in Specific Populations (8.4)*].

Consider the use of dexrazoxane to reduce the incidence and severity of cardiomyopathy due to doxorubicin HCl administration in patients who have received a cumulative doxorubicin HCl dose of 300 mg/m² and who will continue to receive doxorubicin HCl.

Arrhythmias

Doxorubicin HCl can result in arrhythmias, including life-threatening arrhythmias, during or within a few hours after doxorubicin HCl administration and at any time point during treatment. Tachyarrhythmias, including sinus tachycardia, premature ventricular contractions, and

ventricular tachycardia, as well as bradycardia may occur. Electrocardiographic changes including non-specific ST-T wave changes, atrioventricular and bundle-branch block can also occur. These electrocardiographic changes may be transient and self-limited and may not require dose-modifications of doxorubicin HCl.

5.2 Secondary Malignancies

The risk of developing secondary acute myelogenous leukemia (AML) and myelodysplastic syndrome (MDS) is increased following treatment with doxorubicin HCl. Cumulative incidences ranged from 0.2% at five years to 1.5% at 10 years in two separate trials involving the adjuvant treatment of women with breast cancer. These leukemias generally occur within 1 to 3 years of treatment.

5.3 Extravasation and Tissue Necrosis

Extravasation of doxorubicin HCl can result in severe local tissue injury manifesting as blistering, ulceration, and necrosis requiring wide excision of the affected area and skin grafting. When given via a peripheral venous line, infuse doxorubicin over 10 minutes or less to minimize the risk of thrombosis or perivenous extravasation. If signs or symptoms of extravasation occur, immediately terminate the injection or infusion [see *Dosage and Administration (2.3)*]. Extravasation may be present in patients who do not experience a stinging or burning sensation or when blood return is present on aspiration of the infusion needle. If extravasation is suspected, apply ice to the site intermittently for 15 minutes, 4 times a day for 3 days. If appropriate, administer dexrazoxane at the site of extravasation as soon as possible and within the first 6 hours after extravasation.

5.4 Severe Myelosuppression

Doxorubicin HCl can cause myelosuppression. In Study 1, the incidence of severe myelosuppression was: grade 4 leukopenia (0.3%), grade 3 leukopenia (3%), and grade 4 thrombocytopenia (0.1%). A dose-dependent, reversible neutropenia is the predominant manifestation of hematologic toxicity from doxorubicin HCl. When doxorubicin HCl is administered every 21 days, the neutrophil count reaches its nadir 10 to 14 days after administration with recovery usually occurring by the 21st day.

Obtain baseline assessment of blood counts and carefully monitor patients during treatment for possible clinical complications due to myelosuppression.

5.5 Use in Patients with Hepatic Impairment

The clearance of doxorubicin is decreased in patients with elevated serum bilirubin with an increased risk of toxicity [see *Use in Specific Populations (8.7) and Clinical Pharmacology (12.3)*]. Reduce the dose of doxorubicin HCl in patients with serum bilirubin levels of 1.2-5.0 mg/dL [see *Dosage and Administration (2.2)*]. Doxorubicin is contraindicated in patients with severe hepatic impairment (defined as Child Pugh Class C or serum bilirubin level greater than 5 mg/dL) [see *Contraindications (4)*]. Obtain liver tests including SGOT, SGPT, alkaline phosphatase, and bilirubin prior to and during doxorubicin HCl therapy.

5.6 Tumor Lysis Syndrome

Doxorubicin HCl may induce tumor lysis syndrome in patients with rapidly growing tumors. Evaluate blood uric acid levels, potassium, calcium, phosphate, and creatinine after initial treatment. Hydration, urine alkalinization, and prophylaxis with allopurinol to prevent hyperuricemia may minimize potential complications of tumor lysis syndrome.

5.7 Radiation Sensitization and Radiation Recall

Doxorubicin HCl can increase radiation-induced toxicity to the myocardium, mucosa, skin, and liver. Radiation recall, including but not limited to cutaneous and pulmonary toxicity, can occur in patients who receive doxorubicin HCl after prior radiation therapy.

5.8 Embryofetal Toxicity

Doxorubicin HCl can cause fetal harm when administered to a pregnant woman. Doxorubicin HCl was teratogenic and embryotoxic in rats and rabbits at doses lower than the recommended human dose.

If this drug is used during pregnancy, or if the patient becomes pregnant while taking this drug, apprise the patient of the potential hazard to a fetus [see *Use in Specific Populations (8.1)*].

Advise female patients of reproductive potential to use highly effective contraception during treatment with doxorubicin HCl and for 6 months after treatment. Advise patients to contact their healthcare provider if they become pregnant, or if pregnancy is suspected, while taking doxorubicin HCl [see *Use in Specific Populations (8.1) and (8.6)*].

6 ADVERSE REACTIONS

The following adverse reactions are discussed in more detail in other sections of the labeling.

- Cardiomyopathy and Arrhythmias [see *Warnings and Precautions (5.1)*]
- Secondary Malignancies [see *Warnings and Precautions (5.2)*]
- Extravasation and Tissue Necrosis [see *Warnings and Precautions (5.3)*]
- Severe Myelosuppression [see *Warnings and Precautions (5.4)*]
- Tumor Lysis Syndrome [see *Warnings and Precautions (5.6)*]
- Radiation Sensitization and Radiation Recall [see *Warnings and Precautions (5.7)*]

6.1 Clinical Trial Experience in Breast Cancer

Because clinical trials are conducted under widely varying conditions, adverse reaction rates observed in the clinical trials of a drug cannot be directly compared to rates in the clinical trials of another drug and may not reflect the rates observed in clinical practice.

The safety data below were collected from 1492 women who received doxorubicin HCl at a dose

of 60 mg/m² and cyclophosphamide at a dose of 600 mg/m² (AC) every 3 weeks for 4 cycles for the adjuvant treatment of axillary lymph node positive breast cancer. The median number of cycles received was 4. Selected adverse reactions reported in this study are provided in Table 1. No treatment-related deaths were reported in patients on either arm of the study.

Table 1. Selected Adverse Reactions in Patients with Early Breast Cancer Involving Axillary Lymph Nodes		
	AC*	Conventional CMF
	N=1492	N=739
Adverse reactions, % of patients		
Leukopenia		
Grade 3 (1,000–1,999 /mm ³)	3.4	9.4
Grade 4 (<1000 /mm ³)	0.3	0.3
Thrombocytopenia		
Grade 3 (25,000–49,999 /mm ³)	0	0.3
Grade 4 (<25,000 /mm ³)	0.1	0
Shock, sepsis	2	1
Systemic infection	2	1
Vomiting		
Vomiting ≤12 hours	34	25
Vomiting >12 hours	37	12
Intractable	5	2
Alopecia	92	71
Cardiac dysfunction		
Asymptomatic	0.2	0.1
Transient	0.1	0
Symptomatic	0.1	0

* Includes pooled data from patients who received either AC alone for 4 cycles, or who were treated with AC for 4 cycles followed by 3 cycles of CMF

6.2 Postmarketing Experience

The following adverse reactions have been identified during post-approval use of doxorubicin HCl. Because these reactions are reported voluntarily from a population of uncertain size, it is not always possible to reliably estimate their frequency or establish a causal relationship to drug exposure.

Cardiac – cardiogenic shock

Cutaneous –Skin and nail hyperpigmentation, oncolysis, rash, itching, photosensitivity, urticaria, acral erythema, palmar plantar erythrodysesthesia

Gastrointestinal – Nausea, mucositis, stomatitis, necrotizing colitis, typhlitis, gastric erosions, gastrointestinal tract bleeding, hematochezia, esophagitis, anorexia, abdominal pain, dehydration, diarrhea, hyperpigmentation of the oral mucosa

Hypersensitivity – Anaphylaxis

Laboratory Abnormalities –Increased alanine aminotransferase, increased aspartate aminotransferase

Neurological – Peripheral sensory and motor neuropathy, seizures, coma

Ocular – Conjunctivitis, keratitis, lacrimation

Vascular – Phlebosclerosis, phlebitis/thrombophlebitis, hot flashes, thromboembolism

Other – Malaise/asthenia, fever, chills, weight gain

7 DRUG INTERACTIONS

7.1 Effect of CYP3A4 Inhibitors, Inducers and P-gp

Doxorubicin is a major substrate of cytochrome P450 CYP3A4 and CYP2D6, and P-glycoprotein (P-gp). Clinically significant interactions have been reported with inhibitors of CYP3A4, CYP2D6, and/or P-gp (e.g., verapamil), resulting in increased concentration and clinical effect of doxorubicin. Inducers of CYP3A4 (e.g., phenobarbital, phenytoin, St. John's Wort) and P-gp inducers may decrease the concentration of doxorubicin. Avoid concurrent use of doxorubicin HCl with inhibitors and inducers of CYP3A4, CYP2D6, or P-gp.

7.2 Trastuzumab

Concurrent use of trastuzumab and doxorubicin HCl results in an increased risk of cardiac dysfunction. Avoid concurrent administration of doxorubicin and trastuzumab. The appropriate interval for administering doxorubicin following trastuzumab therapy has not been determined [*see Warnings and Precautions (5.1)*].

7.3 Paclitaxel

Paclitaxel, when given prior to doxorubicin HCl, increases the plasma-concentrations of doxorubicin and its metabolites. Administer doxorubicin HCl prior to paclitaxel if used concomitantly.

7.4 Dexrazoxane

Do not administer dexrazoxane as a cardioprotectant at the initiation of doxorubicin HCl-containing chemotherapy regimens. In a randomized trial in women with metastatic breast cancer, initiation of dexrazoxane with doxorubicin HCl-based chemotherapy resulted in a significantly lower tumor response rate (48% vs. 63%; $p=0.007$) and shorter time to progression than in women who received doxorubicin HCl-based chemotherapy alone.

7.5 6-Mercaptopurine

Doxorubicin HCl may potentiate 6-mercaptopurine-induced hepatotoxicity. In 11 patients with refractory leukemia treated with 6-mercaptopurine (500 mg/m² intravenously daily for 5 days per cycle every 2-3 weeks) and doxorubicin HCl (50 mg/m² intravenous once per cycle every 2-3 weeks) alone or with vincristine and prednisone, all developed hepatic dysfunction manifested by elevations of total serum bilirubin, alkaline phosphatase and aspartate aminotransferase.

8 USE IN SPECIFIC POPULATIONS

8.1 Pregnancy

Pregnancy Category D

Risk Summary

Doxorubicin HCl can cause fetal harm when administered to a pregnant woman. Doxorubicin HCl was teratogenic and embryotoxic in rats and rabbits at doses approximately 0.07 times (based on body surface area) the recommended human dose of 60 mg/m². If this drug is used during pregnancy, or if the patient becomes pregnant while taking this drug, apprise the patient of the potential hazard to a fetus.

Animal Data

Doxorubicin HCl was teratogenic and embryotoxic at doses of 0.8 mg/kg/day (about 0.07 times the recommended human dose based on body surface area) when administered during the period of organogenesis in rats. Teratogenicity and embryotoxicity were also seen using discrete periods of treatment. The most susceptible was the 6- to 9-day gestation period at doses of 1.25 mg/kg/day and greater. Characteristic malformations included esophageal and intestinal atresia, tracheo-esophageal fistula, hypoplasia of the urinary bladder, and cardiovascular anomalies. Doxorubicin HCl was embryotoxic (increase in embryofetal deaths) and abortifacient at 0.4 mg/kg/day (about 0.07 times the recommended human dose based on body surface area) in rabbits when administered during the period of organogenesis.

8.3 Nursing Mothers

Doxorubicin has been detected in the milk of at least one lactating patient [*see Clinical Pharmacology (12.3)*]. Because of the potential for serious adverse reactions in nursing infants from doxorubicin HCl, a decision should be made whether to discontinue nursing or discontinue the drug, taking into account the importance of the drug to the mother.

8.4 Pediatric Use

Based on postmarketing reports, pediatric patients treated with doxorubicin HCl are at risk for developing late cardiovascular dysfunction. Risk factors include young age at treatment

(especially < 5 years), high cumulative doses and receipt of combined modality therapy. Long-term periodic cardiovascular monitoring is recommended for all pediatric patients who have received doxorubicin HCl. Doxorubicin HCl, as a component of intensive chemotherapy regimens administered to pediatric patients, may contribute to prepubertal growth failure and may also contribute to gonadal impairment, which is usually temporary.

There are no recommended dose adjustments based on age. Doxorubicin clearance was increased in patients aged 2 years to 20 years as compared to adults, while doxorubicin clearance was similar in children less than 2 years as compared to adults [see *Clinical Pharmacology (12.3)*].

8.5 Geriatric Use

Clinical experience in patients who were 65 years of age and older who received doxorubicin HCl-based chemotherapy regimens for metastatic breast cancer showed no overall differences in safety and effectiveness compared with younger patients.

8.6 Females and Males of Reproductive Potential

Contraception

Females

Doxorubicin HCl can cause fetal harm when administered during pregnancy. Advise female patients of reproductive potential to use highly effective contraception during treatment with doxorubicin HCl and for 6 months after treatment. Advise patients to contact their healthcare provider if they become pregnant, or if pregnancy is suspected, while taking doxorubicin HCl [see *Use in Specific Populations (8.1)*].

Males

Doxorubicin HCl may damage spermatozoa and testicular tissue, resulting in possible genetic fetal abnormalities. Males with female sexual partners of reproductive potential should use effective contraception during and for 6 months after treatment [see *Nonclinical Toxicology (13.1)*].

Infertility

Females

In females of reproductive potential, doxorubicin HCl may cause infertility and result in amenorrhea. Premature menopause can occur. Recovery of menses and ovulation is related to age at treatment [see *Nonclinical Toxicology (13.1)*].

Males

Doxorubicin HCl may result in oligospermia, azoospermia, and permanent loss of fertility. Sperm counts have been reported to return to normal levels in some men. This may occur several years after the end of therapy.

8.7 Hepatic Impairment

The clearance of doxorubicin was reduced in patients with elevated serum bilirubin levels. Reduce the dose of doxorubicin HCl in patients with serum bilirubin levels greater than 1.2 mg/dL [See *Dosage and Administration (2.2)* and *Warnings and Precautions (5.5)*].

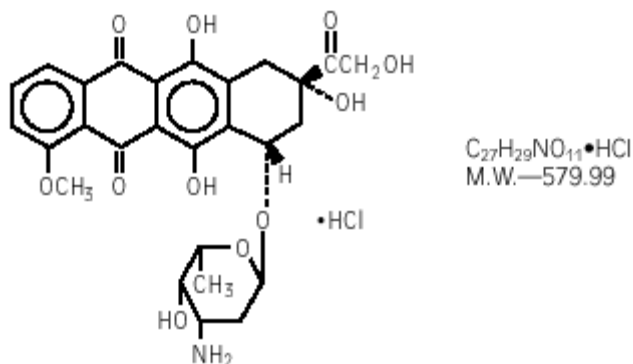
Doxorubicin HCl is contraindicated in patients with severe hepatic impairment (defined as Child Pugh Class C or serum bilirubin levels greater than 5 mg/dL) [see *Contraindications (4)*].

10 OVERDOSAGE

Few cases of overdose have been described. A 58-year-old man with acute lymphoblastic leukemia received 10-fold overdose of doxorubicin HCl (300 mg/m²) in one day. He was treated with charcoal filtration, hemopoietic growth factor (G-CSF), proton pump inhibitor and antimicrobial prophylaxis. The patient suffered sinus tachycardia, grade 4 neutropenia and thrombocytopenia for 11 days, severe mucositis and sepsis. The patient recovered completely 26 days after the overdose. A 17-year-old girl with osteogenic sarcoma received 150 mg of doxorubicin HCl daily for 2 days (intended dose was 50 mg per day for 3 days). The patient developed severe mucositis on days 4-7 after the overdose and chills and pyrexia on day 7. The patient was treated with antibiotics and platelets and recovered 18 days after overdose.

11 DESCRIPTION

Doxorubicin Hydrochloride is a cytotoxic, anthracycline, topoisomerase II inhibitor isolated from cultures of *Streptomyces peucetius* var. *caesius*. Chemically, doxorubicin hydrochloride is: 5,12-Naphthacenedione, 10-[(3-amino-2,3,6-trideoxy- α -L-lyxo-hexopyranosyl)oxy]-7,8,9,10-tetrahydro-6,8,11-trihydroxy-8-(hydroxylacetyl)-1-methoxy-, hydrochloride (8S-cis)-. The chemical structure of doxorubicin HCl is:



Doxorubicin Hydrochloride Injection, USP is a clear, red, sterile, isotonic aqueous solution provided in vials containing 10 mg/5 mL, 20 mg/10 mL, 50 mg/25 mL, 150 mg/75 mL, or 200 mg/100 mL of doxorubicin HCl. The drug product has demonstrated inherent antimicrobial activity suitable for a multiple dose presentation. Each milliliter of solution contains 2 mg of doxorubicin HCl. Inactive ingredients include sodium chloride 0.9%, USP, and water for injection, USP, quantity sufficient. The pH of the solution is adjusted to 3.0 with hydrochloric acid, USP.

Doxorubicin Hydrochloride for Injection, USP is a sterile red-orange lyophilized powder, provided in vials containing 10 mg, 20 mg, 50 mg, or 150 mg doxorubicin HCl. The drug product has demonstrated inherent antimicrobial activity suitable for a multiple dose presentation. For each 10 mg doxorubicin HCl, each vial contains 50 mg lactose and 1 mg methylparaben.

12 CLINICAL PHARMACOLOGY

12.1 Mechanism of Action

The cytotoxic effect of doxorubicin HCl on malignant cells and its toxic effects on various organs are thought to be related to nucleotide base intercalation and cell membrane lipid binding activities of doxorubicin. Intercalation inhibits nucleotide replication and action of DNA and RNA polymerases. The interaction of doxorubicin with topoisomerase II to form DNA-cleavable complexes appears to be an important mechanism of doxorubicin HCl cytotoxic activity.

12.3 Pharmacokinetics

Pharmacokinetic studies conducted in patients with various types of tumors have shown that doxorubicin follows multiphasic disposition after intravenous injection. The distribution half-life is approximately 5 minutes, while the terminal half-life is 20 to 48 hours. In four patients, doxorubicin demonstrated dose-independent pharmacokinetics across a dose range of 30 to 70 mg/m².

Distribution

Steady-state distribution volume ranges from 809 to 1214 L/m². Binding of doxorubicin and its major metabolite, doxorubicinol, to plasma proteins is about 75% and is independent of plasma concentration of doxorubicin up to 1.1 µg/mL.

Doxorubicin was measured in the milk of one lactating patient after therapy with 70 mg/m² of doxorubicin HCl given as a 15-minute intravenous infusion. The peak milk concentration at 24 hours after treatment was 4.4-fold greater than the corresponding plasma concentration. Doxorubicin was detectable in the milk up to 72 hours.

Doxorubicin does not cross the blood brain barrier.

Metabolism

Enzymatic reduction at the 7 position and cleavage of the daunosamine sugar yields aglycones which are accompanied by free radical formation, the local production of which may contribute to the cardiotoxic activity of doxorubicin HCl. Disposition of doxorubicinol in patients is formation rate limited, with the terminal half-life of doxorubicinol being similar to doxorubicin. The relative exposure of doxorubicinol, i.e., the ratio between the AUC of doxorubicinol and the AUC of doxorubicin is approximately 0.5.

Excretion

Plasma clearance is in the range 324 to 809 mL/min/m² and is predominately by metabolism and biliary excretion. Approximately 40% of the dose appears in the bile in 5 days, while only 5 to 12% of the drug and its metabolites appear in the urine during the same time period. In urine, <3% of the dose was recovered as doxorubicinol over 7 days.

Systemic clearance of doxorubicin is significantly reduced in obese women with ideal body weight greater than 130%. There was a significant reduction in clearance without any change in volume of distribution in obese patients when compared with normal patients with less than 115% ideal body weight.

Pediatric patients

Following administration of doses ranging from 10 to 75 mg/m² of doxorubicin HCl to 60 children and adolescents ranging from 2 months to 20 years of age, doxorubicin clearance averaged 1443 ± 114 mL/min/m². Further analysis demonstrated that clearance in 52 children greater than 2 years of age (1540 mL/min/m²) was increased compared with adults. However, clearance in infants younger than 2 years of age (813 mL/min/m²) was decreased compared with older children and approached the range of clearance values determined in adults [*see Use in Specific Populations (8.4)*].

Patient Gender

There is no recommended dose adjustment based on gender. A published clinical study involving 6 men and 21 women with no prior anthracycline therapy reported a significantly higher median doxorubicin clearance in men compared to women (1088 mL/min/m² versus 433 mL/min/m²). However, the terminal half-life of doxorubicin was longer in men compared to women (54 versus 35 hours).

Patients with hepatic impairment

The clearance of doxorubicin and doxorubicinol was reduced in patients with elevation in serum bilirubin [*see Dosage and Administration (2.2) and Warnings and Precautions (5.5)*].

13 NONCLINICAL TOXICOLOGY

13.1 Carcinogenesis, Mutagenesis, Impairment of Fertility

Doxorubicin HCl treatment results in an increased risk of secondary malignancies based on postmarketing reports [see *Warnings and Precautions (5.2)*]. Doxorubicin HCl was mutagenic in the *in vitro* Ames assay, and clastogenic in multiple *in vitro* assays (CHO cell, V79 hamster cell, human lymphoblast, and SCE assays) and the *in vivo* mouse micronucleus assay.

Doxorubicin HCl decreased fertility in female rats at the doses of 0.05 and 0.2 mg/kg/day (approximately 0.005 and 0.02 times the recommended human dose, based on body surface area).

A single intravenous dose of 0.1 mg/kg doxorubicin HCl (approximately 0.01 times the recommended human dose based on body surface area) was toxic to male reproductive organs in animal studies, producing testicular atrophy, diffuse degeneration of the seminiferous tubules, and oligospermia/hypospermia in rats. Doxorubicin HCl induces DNA damage in rabbit spermatozoa and dominant lethal mutations in mice.

14 CLINICAL STUDIES

The clinical efficacy of doxorubicin HCl-containing regimens for the post-operative, adjuvant treatment of surgically resected breast cancer was evaluated in a meta-analysis conducted by the Early Breast Cancer Trialists Collaborative Group (EBCTCG). The EBCTCG meta-analyses compared cyclophosphamide, methotrexate, and 5-fluorouracil (CMF) to no chemotherapy (19 trials including 7523 patients) and doxorubicin HCl-containing regimens with CMF as an active control (6 trials including 3510 patients). Data from the meta-analysis of trials comparing CMF to no therapy were used to establish the historical treatment effect size for CMF regimens. The major efficacy outcome measures were disease-free survival (DFS) and overall survival (OS).

Of the 3510 women (2157 received doxorubicin HCl-containing regimens and 1353 received CMF treatment) with early breast cancer involving axillary lymph nodes included in the six trials from the meta-analyses, approximately 70% were premenopausal and 30% were postmenopausal. At the time of the meta-analysis, 1745 first recurrences and 1348 deaths had occurred. The analyses demonstrated that doxorubicin HCl-containing regimens retained at least 75% of the historical CMF adjuvant effect on DFS with a hazard ratio (HR) of 0.91 (95% CI, 0.82–1.01) and on OS with a HR of 0.91 (95% CI, 0.81–1.03). Results of these analyses for both DFS and OS are provided in Table 2 and Figures 1 and 2.

Table 2. Summary of Randomized Trials Comparing Doxorubicin HCl-Containing Regimens Versus CMF in Meta-Analysis

Study (starting year)	Regimens	No. of Cycles	No. of Patients	Doxorubicin HCl-Containing Regimens vs. CMF HR** (95% CI)	
				DFS	OS
NSABP B-15 (1984)	AC	4	1562*	0.93 (0.82–1.06)	0.97 (0.83–1.12)
	CMF	6	776		
SECSG 2 (1976)	FAC	6	260	0.86 (0.66–1.13)	0.93 (0.69–1.26)
	CMF	6	268		
ONCOFRANCE (1978)	FACV	12	138	0.71 (0.49–1.03)	0.65 (0.44–0.96)
	CMF	12	113		
SE Sweden BCG A (1980)	AC	6	21	0.59 (0.22–1.61)	0.53 (0.21–1.37)
	CMF	6	22		
NSABC Israel Br0283 (1983)	AVbCMF [†]	4	55	0.91 (0.53–1.57)	0.88 (0.47–1.63)
	CMF	6			
Austrian BCSG 3 (1984)	CMFVA	6	121	1.07 (0.73–1.55)	0.93 (0.64–1.35)
	CMF	8	124		
Combined Studies	Doxorubicin HCl-Containing Regimens		2157	0.91 (0.82–1.01)	0.91 (0.81–1.03)
	CMF		1353		

Abbreviations: DFS = disease free survival; OS = overall survival; AC = doxorubicin HCl, cyclophosphamide; AVbCMF = doxorubicin HCl, vinblastine, cyclophosphamide, methotrexate, 5-fluorouracil; CMF = cyclophosphamide, methotrexate, 5-fluorouracil; CMFVA = cyclophosphamide, methotrexate, 5-fluorouracil, vincristine, doxorubicin HCl; FAC = 5-fluorouracil, doxorubicin HCl, cyclophosphamide; FACV = 5-fluorouracil, doxorubicin HCl, cyclophosphamide, vincristine; HR = hazard ratio; CI = confidence interval

* Includes pooled data from patients who received either AC alone for 4 cycles, or who were treated with AC for 4 cycles followed by 3 cycles of CMF.

** a hazard ratio of less than 1 indicates that the treatment with doxorubicin HCl-containing regimens is associated with lower risk of disease recurrences or death compared to the treatment with CMF.

[†] Patients received alternating cycles of AVb and CMF.

Figure 1. Meta-analysis of Disease-Free Survival

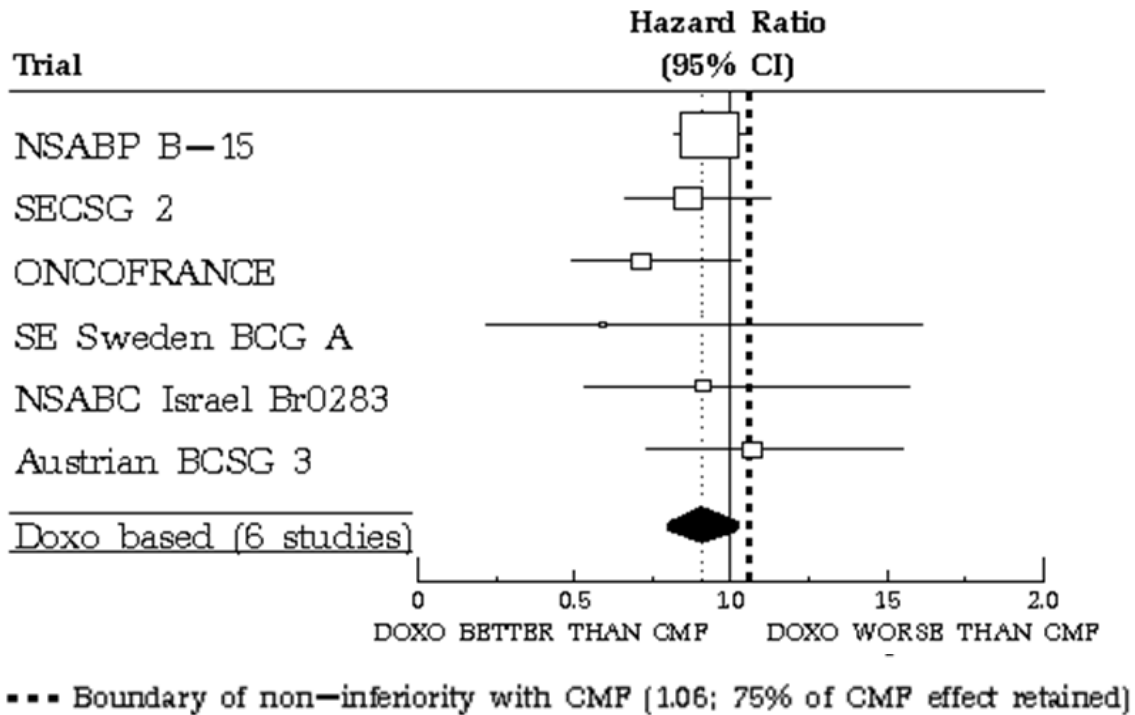
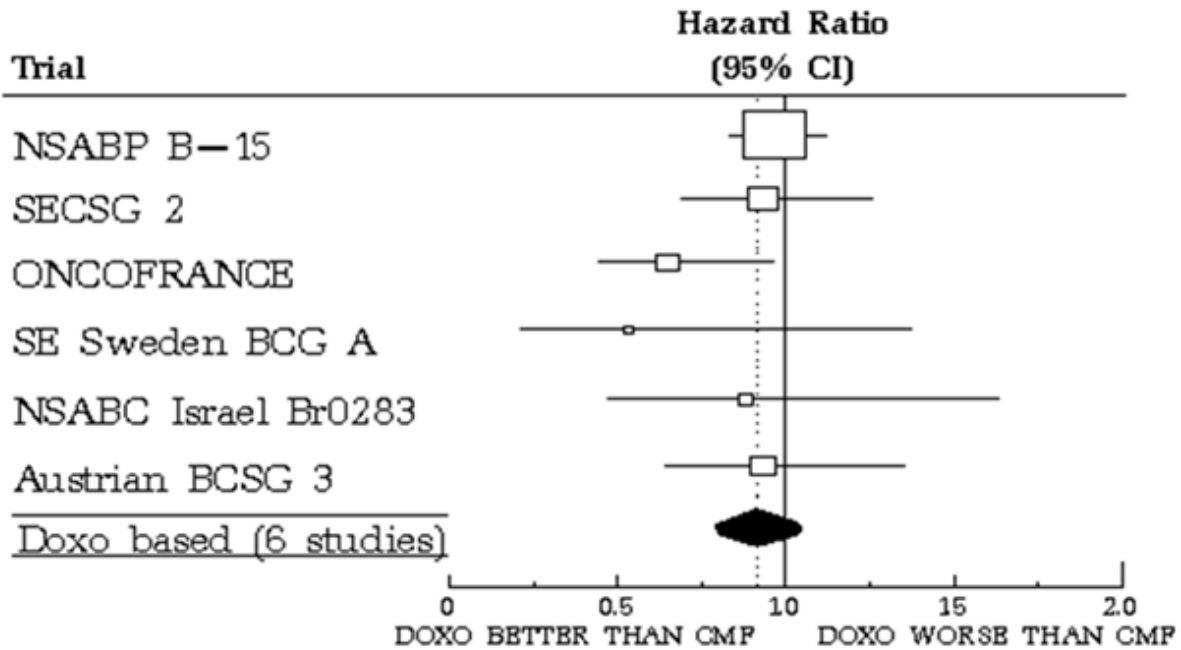


Figure 2. Meta-analysis of Overall Survival



15 REFERENCES

1. "Hazardous Drugs". *OSHA*. <http://www.osha.gov/SLTC/hazardousdrugs/index.html>

16 HOW SUPPLIED/STORAGE AND HANDLING

Doxorubicin Hydrochloride Injection, USP is a sterile parenteral, isotonic solution, available in polypropylene (CYTOSAFE)[®] vials in single vial packs as:

SINGLE-DOSE VIALS:

10 mg/5 mL (2 mg/mL) NDC 0069-3030-20
20 mg/10 mL (2 mg/mL) NDC 0069-3031-20
50 mg/25 mL (2 mg/mL) NDC 0069-3032-20

Retain in carton until time of use. Discard unused portion.

MULTIPLE-DOSE VIALS:

150 mg/75 mL (2 mg/mL) NDC 0069-3033-20
200 mg/100 mL (2 mg/mL) NDC 0069-3034-20

Retain in carton until contents are used.

Store all vials at 2° to 8°C (36° to 46°F). Protect from light.

Storage of *Doxorubicin Hydrochloride Injection* under refrigerated conditions can result in the formation of a gelled product. Place gelled product at room temperature [15° to 30°C (59° to 86°F)] for 2 to 4 hours to return the product to a slightly viscous, mobile solution.

Doxorubicin Hydrochloride for Injection, USP, is a sterile red-orange lyophilized powder, available in single vial packs or 10 vial packs as:

SINGLE-DOSE VIALS:

10 mg
20 mg
50 mg

Retain in carton until time of use. Discard unused portion.

MULTIPLE-DOSE VIALS:

150 mg

Retain in carton until contents are used.

Store all vials at room temperature 15° to 30°C (59° to 86°F). Protect from light.

Handling and Disposal

Handle and dispose of Doxorubicin Hydrochloride Injection and Doxorubicin Hydrochloride for Injection consistent with recommendations for the handling and disposal of hazardous drugs.¹

17 PATIENT COUNSELING INFORMATION

See FDA-Approved Patient Labeling (Patient Information).

Inform patients of the following:

- Doxorubicin HCl can cause irreversible myocardial damage. Advise patients to contact a healthcare provider for symptoms of heart failure during or after treatment with doxorubicin HCl [*see Warnings and Precautions (5.1)*].
- There is an increased risk of treatment-related leukemia from doxorubicin HCl [*see Warnings and Precautions (5.2)*].
- Doxorubicin HCl can reduce the absolute neutrophil count resulting in an increased risk of infection. Advise patients to contact a healthcare provider for new onset fever or symptoms of infection [*see Warnings and Precautions (5.4)*].
- Doxorubicin HCl can cause fetal harm when administered during pregnancy. Advise females of reproductive potential to use effective contraception during treatment with doxorubicin HCl and for 6 months after treatment, and to contact their healthcare provider if they become pregnant, or if pregnancy is suspected, during treatment with doxorubicin HCl [*see Warnings and Precautions (5.8) and Use in Specific Populations (8.6)*].
- Doxorubicin HCl may induce chromosomal damage in sperm, which may lead to loss of fertility and offspring with birth defects. Advise patients to use effective contraception during and for 6 months after treatment [*see Warnings and Precautions (5.8) and Use in Specific Populations (8.6)*].
- Doxorubicin HCl can cause premature menopause in females and loss of fertility in males [*see Use in Specific Populations (8.6)*].
- Discontinue nursing while receiving doxorubicin HCl [*see Use in Specific Populations (8.3)*].
- Doxorubicin HCl can cause nausea, vomiting, diarrhea, mouth/oral pain and sores. Advise patients to contact a healthcare provider should they develop any severe symptoms that prevent them from eating and drinking [*see Adverse Reactions (6)*].
- Doxorubicin HCl causes alopecia [*see Adverse Reactions (6.1)*].
- Doxorubicin HCl can cause their urine to appear red for 1 to 2 days after administration.



Distributed by
Pfizer Labs
Division of Pfizer Inc
New York, NY 10017

LAB-0073-13.0

Patient Information

DOXORUBICIN (*dok-suh-roo-buh-sin*) **HYDROCHLORIDE** **Injection, for intravenous use** **For Injection, for intravenous use**

What is the most important information I should know about Doxorubicin?

Doxorubicin may cause serious side effects including:

- **Heart failure.** Doxorubicin may cause heart muscle damage that may lead to heart failure, which is a condition in which the heart does not pump well. Heart failure is irreversible in some cases and can lead to death. Heart failure can happen during your treatment with Doxorubicin or months to years after stopping treatment. Your risk of heart muscle damage increases with higher total amounts of doxorubicin hydrochloride that you receive in your lifetime. Your risk of heart failure is higher if you:
 - already have other heart problems
 - have had or are currently receiving radiation therapy to your chest
 - have had treatment with certain other anti-cancer medicines
 - take other medicines that can have severe side effects on your heart

Tell your doctor if you get any of these symptoms of heart failure during or after treatment with Doxorubicin:

- extreme tiredness or weakness
- shortness of breath
- fast heartbeat
- swelling of your feet and ankles

Your doctor will do tests to check the strength of your heart muscle before, during, and after your treatment with Doxorubicin.

- **Risk of new cancers.** You may have an increased risk of developing certain blood cancers called acute myelogenous leukemia (AML) or myelodysplastic syndrome (MDS) after treatment with doxorubicin. Talk with your doctor about your risk of developing new cancers if you take Doxorubicin.
- **Skin damage near the vein where Doxorubicin is given (Injection site reaction).** Doxorubicin can damage the skin if it leaks out of the vein. Symptoms of infusion reaction include blisters and skin sores at injection site which may require skin grafts.
- **Decreased blood cell counts.** Doxorubicin can cause a decrease in neutrophils (a type of white blood cells important in fighting bacterial infections) and platelets (important for clotting and to control bleeding). This may lead to a serious infection, the need for blood transfusions, treatment in a hospital and death. Your doctor will check your blood cell count during your treatment with Doxorubicin and after you have stopped your treatment. Call

your doctor right away if you get a fever (temperature of 100.4 F or greater) or chills with shivering.

What is Doxorubicin?

Doxorubicin is a prescription medicine used to treat certain types of cancers. Doxorubicin may be used alone or along with other anti-cancer medicines.

Who should not receive Doxorubicin?

Do not receive Doxorubicin if:

- you have had a recent heart attack or have severe heart problems
- your blood cell counts (platelets, red blood cells, and white blood cells) are very low because of prior chemotherapy
- you have a severe liver problem
- you have had a serious allergic reaction to doxorubicin hydrochloride

What should I tell my doctor before receiving Doxorubicin?

Before you receive Doxorubicin, tell your doctor if you:

- have heart problems including heart failure
- are currently receiving radiation therapy or plan to receive radiation to the chest
- have severe liver problems
- have had an allergic reaction to doxorubicin
- have any other medical conditions
- are pregnant or plan to become pregnant. Doxorubicin can harm your unborn baby. Women who are able to become pregnant and men who take Doxorubicin should use effective birth control (contraception) during treatment and for 6 months after treatment. Talk to your doctor about birth control methods. If you or your partner becomes pregnant, tell your doctor right away.
- are breastfeeding or plan to breast feed. Doxorubicin can pass into your breast milk and harm your baby. You and your doctor should decide if you will receive Doxorubicin or breastfeed. You should not do both.

Tell your doctor about all the medicines you take, including prescription and over-the-counter medicines, vitamins, and herbal supplements. Doxorubicin can interact with other medicines. Do not start any new medicine before you talk with the doctor that prescribed Doxorubicin.

Know the medicines you take. Keep a list to show your doctor and pharmacist each time you get a new medicine.

How will I receive Doxorubicin?

- Doxorubicin will be given to you into your vein.

What are the possible side effects of Doxorubicin?

Doxorubicin may cause serious side effects, including:

- See **“What is the most important information I should know about Doxorubicin?”**

Doxorubicin may cause lower sperm counts and sperm problems in men.

This could affect your ability to father a child and cause birth defects. Talk to your healthcare provider if this is a concern for you. Talk to your healthcare provider about family planning options that might be right for you.

Irreversible amenorrhea or early menopause. Your periods (menstrual cycle) may completely stop when you receive Doxorubicin. Your periods may or may not return following treatment. Talk to your healthcare provider about family planning options that might be right for you.

The most common side effects of Doxorubicin include:

- Total hair loss (alopecia). Your hair may re-grow after your treatment.
- nausea
- vomiting

Other side effects:

- Red colored urine. You may have red colored urine for 1 to 2 days after your infusion of Doxorubicin. This is normal. Tell your doctor if it does not stop in a few days, or if you see what looks like blood or blood clots in your urine.
- Darkening of your nails or separation of your nails from your nail bed.
- Easy bruising or bleeding.
- Call your doctor if you have severe symptoms that prevent you from eating or drinking, such as:
 - nausea
 - vomiting
 - diarrhea
 - mouth sores

Tell your doctor or nurse if you have any side effect that bothers you or that does not go away.

These are not all of the possible side effects of Doxorubicin.

Call your doctor for medical advice about side effects. You may report side effects to FDA at 1-800-FDA-1088.

General information about the safe and effective use of Doxorubicin.

Medicines are sometimes prescribed for purposes other than those listed in a Patient Information leaflet.

You can ask your pharmacist or doctor for information about Doxorubicin that is written for health professionals.

For more information, call 1-800-438-1985.

What are the ingredients of Doxorubicin?

Active ingredient: doxorubicin hydrochloride

Inactive ingredients for Doxorubicin Hydrochloride Injection: 0.9% sodium chloride, USP, water for injection, USP, and hydrochloric acid, USP.

Inactive ingredients for Doxorubicin Hydrochloride For Injection: lactose and methylparaben

This Patient Information has been approved by the U.S. Food and Drug Administration.



Distributed by
Pfizer Labs
Division of Pfizer Inc
New York, NY 10017

LAB-0436-2.0
Revised: 10/2013